

Summerfield

ORIOLE

3 Story - 1,760 Sq. Ft.

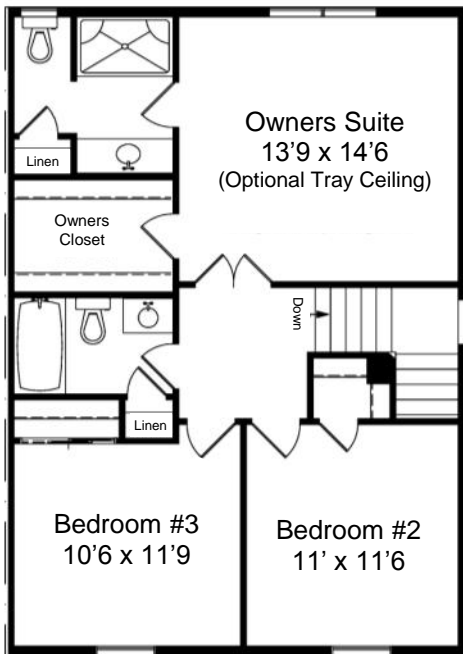
3 BR - 2.5 Bath

(Issue Date: 08/18/16)

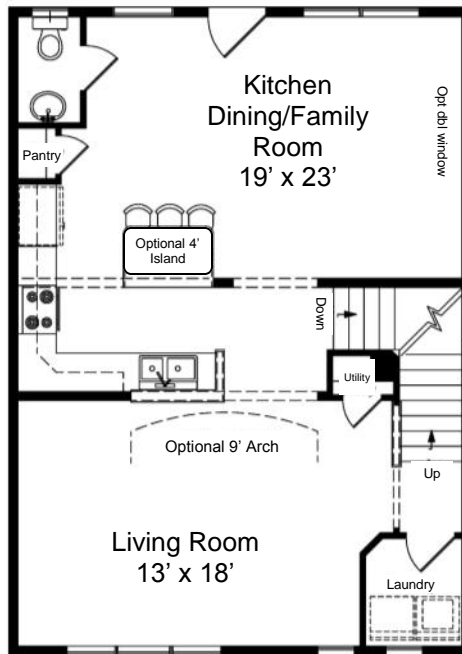


End home

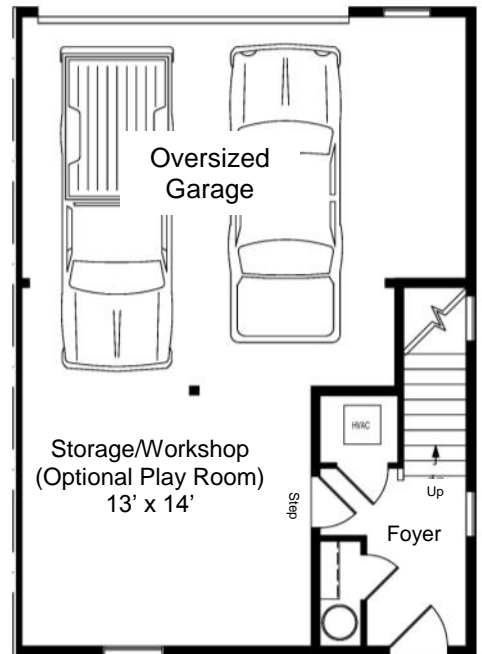
Optional items may be depicted.



THIRD FLOOR



SECOND FLOOR



FIRST FLOOR

Facade renderings & floor plan may show optional items that are not included in base price. Room sizes shown in floor plans are approximate. Not all model types may be built at all unit locations. All information is subject to change without notice. © August 2016 Millfield

www.summerfieldPA.com

Marketed by Millfield Realty

Heather L. Fremont • heather@millfield.com

Office: 717.509.4343 • Mobile: 717.278.0366